

Microsoft

The Puzzles

In a city, click a puzzle button to play that puzzle. Puzzles get harder as you progress.



Find and Fill Find a hidden object among the outlines and fill it with one color.



Focus Point Swap pieces of a picture to assemble the original image.



Image Hole Match the moving holes to the image underneath.



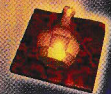
Interlock Fill the shape without letting the seven pieces overlap.



Jesse's Strips Compose the image from strips arranged on trays.



Lens Bender Use special lenses to figure out where the pieces go.



Outer Layer Replace the surface of an object by attaching the pieces.



Overlap Reveal the image by placing the overlapping fragments.



Rotascope Compose the picture by sliding tiles on concentric rings.



Slices Rebuild an object by rotating, flipping, and stacking the slices.

Visit the Microsoft® Pandora's Box Web site at
<http://www.microsoft.com/games/pandorasbox>



* X 4 - 6 7 5 9 3 *

Microsoft



Microsoft®

PANDORA'S BOX

350 puzzles from the creator of *Tetris*, Alexey Pajitnov

Information in this document is subject to change without notice. The names of companies, products, people, characters and/or data mentioned herein are fictitious unless otherwise noted. Complying with all applicable copyright laws is the responsibility of the user. No part of this document may be reproduced or transmitted in any form or by any means, electronic or mechanical, for any purpose, without the express written permission of Microsoft Corporation. If, however, your only means of access is electronic, permission to print one copy is hereby granted.

Microsoft may have patents, patent applications, trademarks, copyrights, or other intellectual property rights covering subject matter in this document. Except as expressly provided in any written license agreement from Microsoft, the furnishing of this document does not give you any license to these patents, trademarks, copyrights, or other intellectual property.

Microsoft, MS, Windows, Windows NT, DirectX, DirectSound, and the Windows logo are either registered trademarks or trademarks of Microsoft Corporation in the U.S. and/or other countries.

Other product and company names mentioned herein may be the trademarks of their respective owners.

Microsoft Product Support Services

Support Online: To easily diagnose and answer technical questions yourself, visit <http://support.microsoft.com/support/>. Or browse consolidated support information about your product at <http://support.microsoft.com/support/games/>.

Standard No-Charge Support: Monday to Friday, excluding holidays, Microsoft offers unlimited no-charge support for this product. In the U.S., call (425) 637-9308, 6:00 A.M. to 6:00 P.M. Pacific time. In Canada, call (905) 568-3503, 8:00 A.M. to 8:00 P.M. eastern time. Toll-charges may apply.

Pay-Per-Incident Support: In the U.S., for a fee of \$15US per incident, call (800) 936-5600 24 hours a day, seven days a week. In Canada, for a fee of \$45CDN plus tax per incident, call (800) 668-7975, 8:00 A.M. to 8:00 P.M. eastern time, Monday to Friday, excluding holidays. Support fees are billed to your VISA, MasterCard, or American Express card.

Text Telephone (TTY/TDD): Available Monday-Friday, excluding holidays. In the U.S., (425) 635-4948, 6:00 A.M. - 6:00 P.M. Pacific time. In Canada, (905) 568-9641, 8:00 A.M. - 8:00 P.M. eastern time.

Additional Support Information: For support information outside the U.S. or Canada, or for additional support resources, see the support.txt file on your product CD.

Support services and prices listed here are available in the United States and Canada only and are subject to Microsoft's then-current prices, terms, and conditions, which are subject to change without notice.

0599 Part No. X04-67593



Setting up

To install Pandora's Box

- ➔ Insert the Pandora's Box CD into the CD-ROM drive, and then follow the directions on the screen.

You must have the Pandora's Box CD in the CD-ROM drive to play the game.

If Setup does not begin automatically, see the Readme file on the Pandora's Box CD.

Getting started

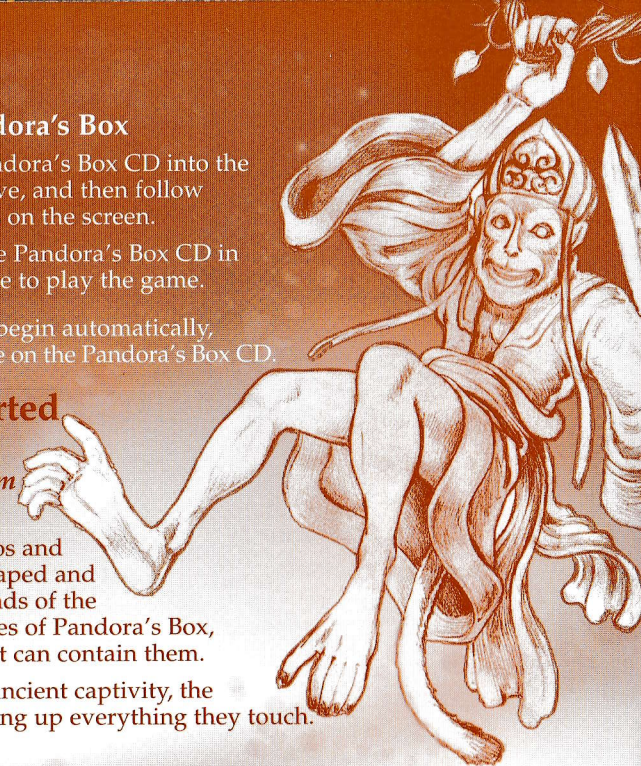
Seven tricksters have escaped from Pandora's Box!

The spirits of chaos and mischief have escaped and scattered to the ends of the earth, hiding pieces of Pandora's Box, the only thing that can contain them.

Freed from their ancient captivity, the tricksters are mixing up everything they touch.

Your goal

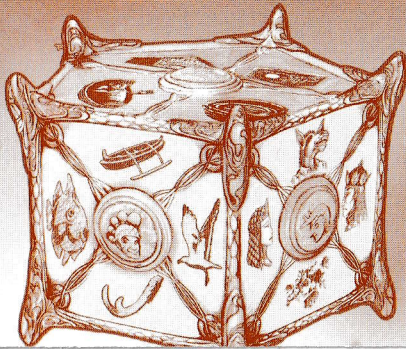
Follow the tricksters around the world, find the missing pieces, and return them all to Pandora's Box.



Finding pieces of the box

Each city contains a set of puzzles, a piece of the box, and hidden bonuses.

- Find one missing piece in each city. The missing piece is hidden behind a puzzle.
- When you find a piece, you'll return to the map, travel to a new city, and start your search for the next piece.
- After you complete a side of the box by finding all of the pieces, you are ready to capture the trickster.
- Within a level, you can always go back to cities where you haven't solved all the puzzles. This is a great way to earn more Hints and Free Puzzle tokens.



Playing the game

To play Pandora's Box

- 1 On the Pandora's Box main screen, type your name, and then click **Play**.
- 2 On the map, click New York to start your search for the first piece.

Note: The game saves automatically when you exit. When you return, it starts where you left off.

Bonuses and options



Hints: Find Hints behind random puzzles. Use one to place a piece if you get stuck.



Free Puzzles: Find Free Puzzle tokens behind random puzzles. Use one to solve any puzzle.



Puzzles solved: Solve 10 puzzles to earn a Free Puzzle token.



Menu: From the Menu or the main screen, go to the **Options** box to turn the timer and sound on/off. Time is no object in Pandora's Box except during speed puzzles, when you earn bonuses for solving puzzles quickly.

You can also challenge yourself by returning to a puzzle in **Puzzles Only** and beating your best time.



Quick Help: Click the **Quick Help** button for help with a puzzle or game screen.





The Tricksters

The spirits of chaos and mischief have escaped from Pandora's Box and taken pieces of the box with them. Follow these tricksters around the world, find the pieces, and reassemble the box.



Puck likes nothing so much as a jest, especially when the joke's on mortals. He's forever laughing at them, except when he's laughing with them.



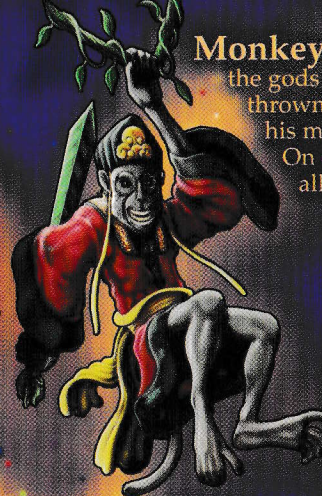
Eris steps in and shakes things up when there's too much order in the world. She's contradictory and contrary, and doesn't like it when things go too smoothly.



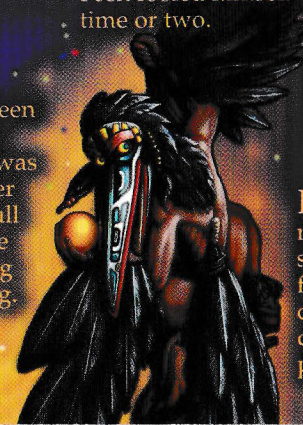
Maui is endlessly inventive, but he never takes anything very seriously. He has a thousand tricks to play, and you never know what his next prank will be.



Coyote has been tricking mortals since the world was young. Whenever people get too full of themselves, he can't resist taking them down a peg.



Monkey played tricks on the gods and got himself thrown out of heaven for his mischief-making. On earth, he's king of all the monkeys.



Anansi likes playing jokes on those who think they're smarter than he is. He can make anyone believe anything, but he's been fooled himself a time or two.



Raven likes mortals, but can't seem to resist having fun with them. You can never tell if he's doing you a favor or playing another joke.